

COMPACT TRACTOR LOADER SNOWPLOWS PARTS BOOK 2007 - 2010

SECTION 1 PLOW COMPONENTS
MODELS: 260, 270, 276

SECTION 2 PLOW ACCESSORIES

PARTS

Part Number 25012540 Rev. C

August 2011

Parts Books/Hiniker/25012540RevC

It is the policy of Hiniker Company to constantly improve its products whenever it is practical to do so.

Hiniker Company must therefore reserve the right to redesign or change its equipment or component parts thereof without incurring the obligation to install or furnish such changes on the equipment previously delivered.

INSTRUCTIONS FOR ORDERING PARTS

1. The item numbers in the illustrations correspond to the same item numbers in the description list. An assembly having a part number can be ordered. All other parts must be ordered individually. The quantity in the "number required" column is the number of parts used in this area of the machine. The term "A/R" for number required indicates "as required" where the quantity may vary. Order all parts by their part number and name. Do not use the reference number.
2. All references to left and right, front and rear apply to the machine as viewed from the rear of the machine, facing forward in the direction of travel.
3. Always mention the identification number of the model and serial numbers found on the name plate of the unit on which the part is to be used. Much delay and confusion can be avoided when correct numbers are specified on parts order and correspondence.

HINIKER COMPANY
58766 240th St.
P.O. BOX 3407
MANKATO, MN 56002-3407 USA
Phone: (800) 433-5620
Fax: (800) 637-3991
E-Mail: hiniker@hiniker.com

SECTION 1

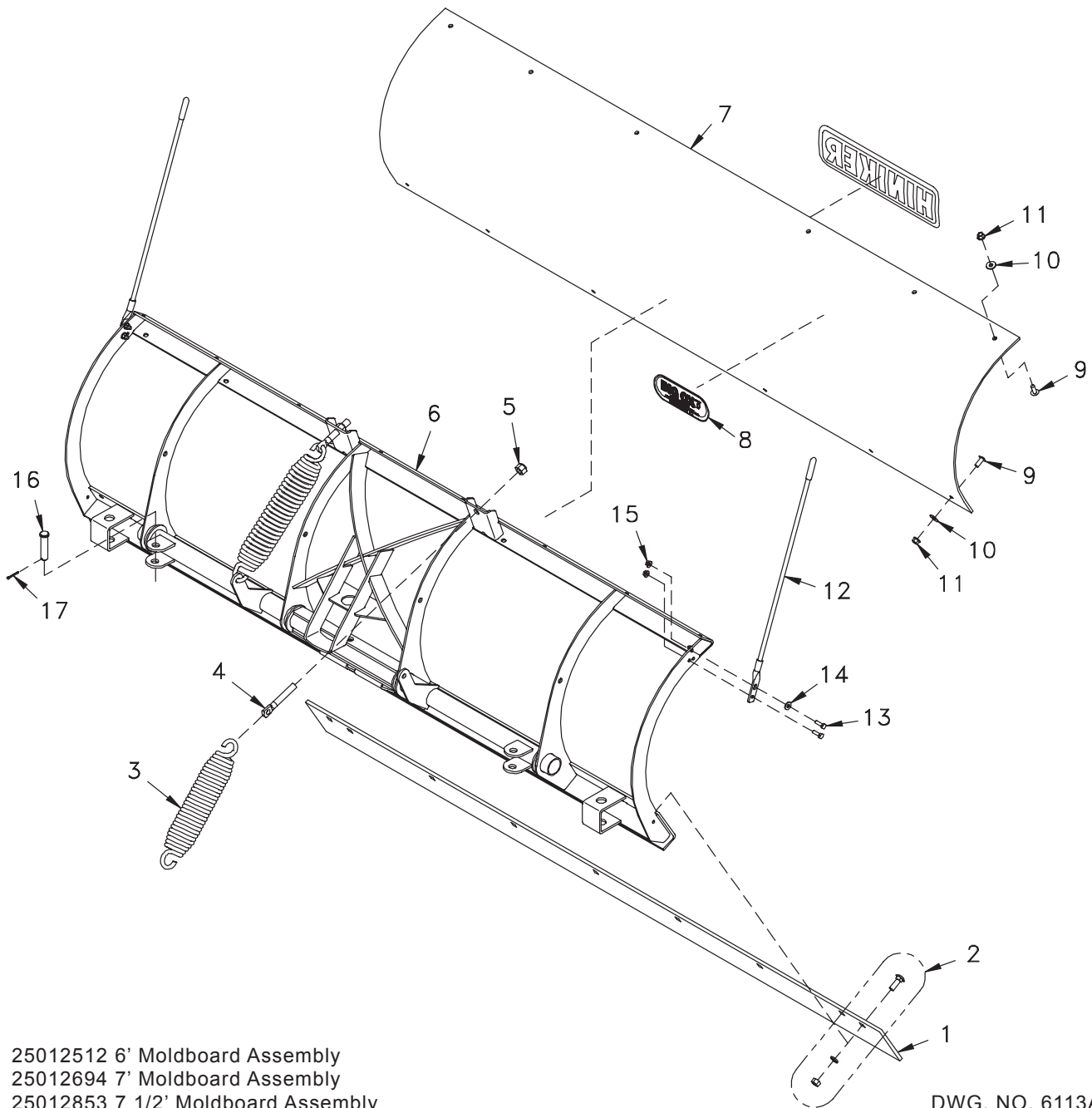
PLOW COMPONENTS

MODELS: 260, 270, 276

| | |
|--------|---|
| PAGE 2 | MOLDBOARD ASSEMBLIES |
| PAGE 3 | FRAME ASSEMBLY |
| PAGE 4 | HYDRAULIC ANGLE KIT OPTION |
| PAGE 5 | CROSSOVER RELIEF VALVE 1 1/2 X 10 HYDRAULIC CYLINDER |
| PAGE 6 | MANUAL ANGLE KIT OPTION |

TRACTOR LOADER SNOWPLOW

MOLDBOARD ASSEMBLIES



25012512 6' Moldboard Assembly
 25012694 7' Moldboard Assembly
 25012853 7 1/2' Moldboard Assembly

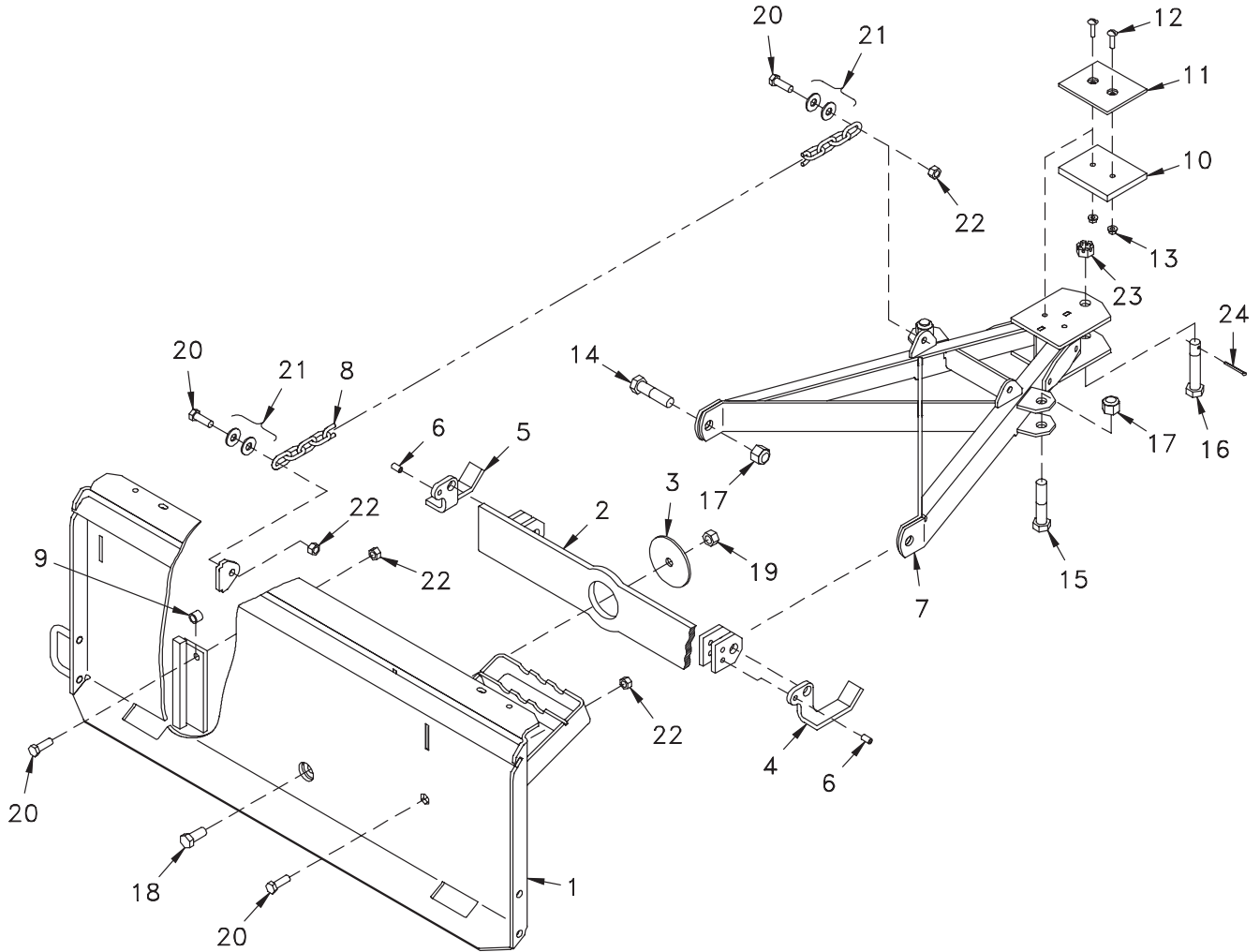
DWG. NO. 6113A

| REF. NO. | PART NUMBER | DESCRIPTION | QTY. | REF. NO. | PART NUMBER | DESCRIPTION | QTY. |
|----------|-------------|--|------|----------|-------------|---|------|
| 1 | 25010002 | 7 1/2' Cutting Edge | 1 | 8 | 36360403 | Big Ox Decal | 1 |
| | 25011839 | 7' Cutting Edge | 1 | 9 | 700-11704 | Machine Screw 3/8-16 x 1 Slotted Truss Head | 12 |
| | 25012526 | 6' Cutting Edge | 1 | 10 | 952-002-013 | Flat Washer, 3/8 Inch Stainless Steel | 12 |
| 2 | 25011051 | Cutting Edge Bolt Kit | 1 | 11 | 951-005-003 | Lock Nut 3/8-16 Mac Lock | 12 |
| | 25010694 | Extension Spring | 2 | 12 | 25010118 | Blade Guide | 2 |
| 4 | 25011863 | Spring Stud | 2 | 13 | 950-001-110 | Hex Head Cap Screw 5/16-18 x 1 Gr. 5 | 4 |
| 5 | 060756 | Lock Nut 5/8-11 Nylon Insert | 1 | 14 | 952-002-002 | Flat Washer 5/16 Inch | 2 |
| | 25012859 | Moldboard Frame Weldment - 7 1/2 Ft Plow | 2 | 15 | 951-005-036 | Lock Nut 5/16-18 Mac Lock | 4 |
| | 25012695 | Moldboard Frame Weldment - 7 Ft Plow | 1 | 16 | 953-002-032 | Clevis Pin 3/4 x 3 | 2 |
| | 25012701 | Moldboard Frame Weldment - 6 Ft Plow | 1 | 17 | 035-42033 | Cotter Pin 5/32 x 1 1/4 | 2 |
| 7 | 25012852 | 7 1/2' Moldboard Blank/Decal Assembly | 1 | | | | |
| | 25012190 | 7' Moldboard Blank/Decal Assembly | 1 | | | | |
| | 25012528 | 6' Moldboard Blank/Decal Assembly | 1 | | | | |

TRACTOR LOADER SNOWPLOW

SECTION
1

FRAME ASSEMBLY

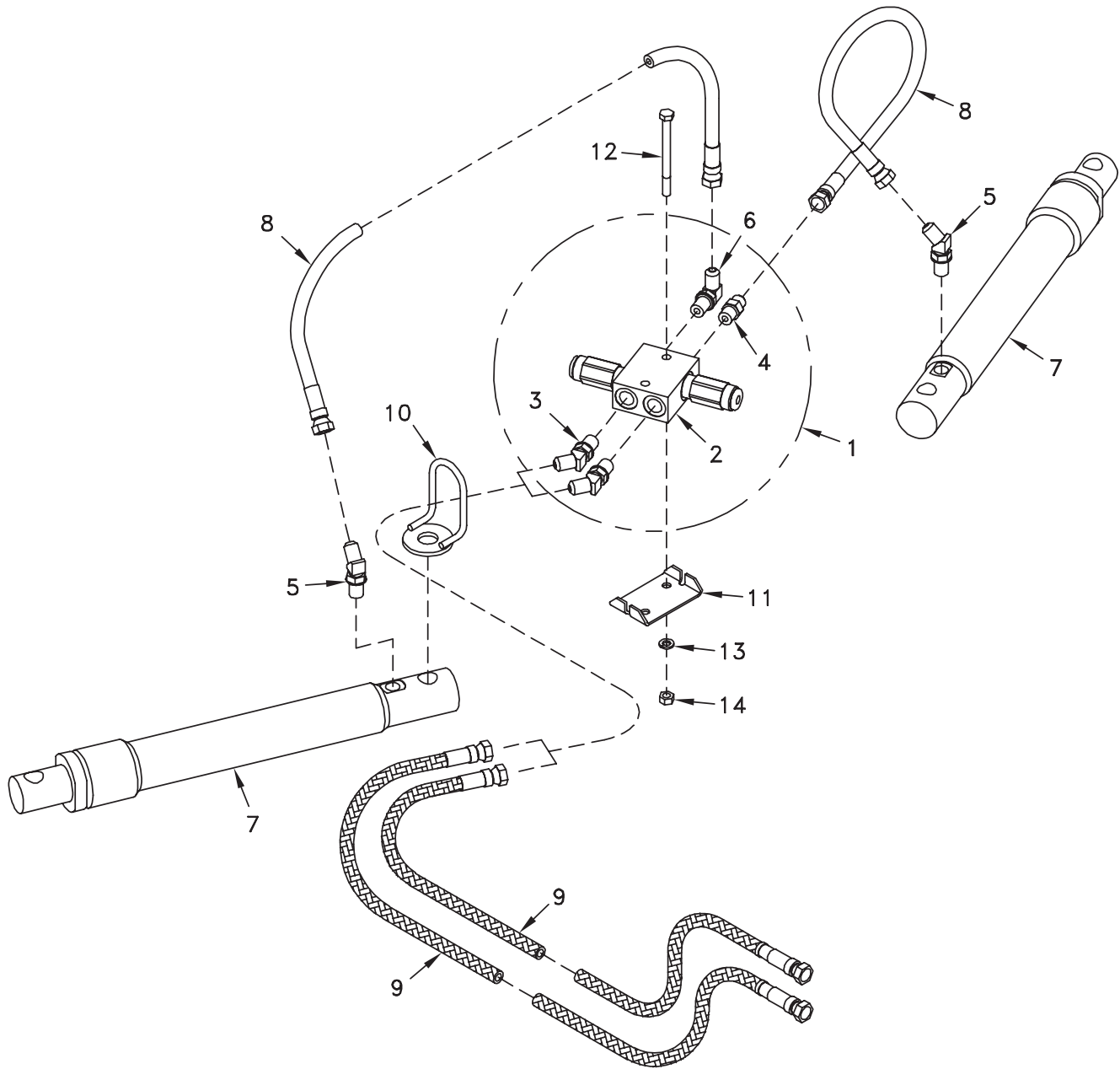


DWG. NO.6114A

| REF. NO. | PART NUMBER | DESCRIPTION | QTY. | REF. NO. | PART NUMBER | DESCRIPTION | QTY. |
|----------|-------------|--|------|----------|-------------|---|------|
| 1 | 25011256 | Mount Frame Weldment | 1 | 13 | 951-005-036 | Lock Nut 5/16-18 Mac Lock | 2 |
| 2 | 25011255 | Bar Weldment | 1 | 14 | 950-001-031 | Hex Head Cap Screw 3/4-10 x 3 Gr. 5 | 2 |
| 3 | 25011254 | Washer | 1 | 15 | 950-001-174 | Hex Head Cap Screw 3/4-10 x 3 1/2 Gr. 5 | 2 |
| 4 | 25011253 | Right Foot | 1 | 16 | 25012630 | Drilled Hex Head Cap Screw 3/4-10 x 4 Gr. 5 | 1 |
| 5 | 25011252 | Left Foot | 1 | 17 | 951-003-010 | Lock Nut 3/4-10 Nylon Insert | 4 |
| 6 | 953-003-035 | Slotted Spring Pin 3/8 x 3/4 | 2 | 18 | 950-001-087 | Hex Head Cap Screw 5/8-11 x 1 1/2 Gr. 5 | 1 |
| 7 | 25012519 | Push Frame Weldment | 1 | 19 | 951-005-044 | Lock Nut 5/8-11 2-Way | 1 |
| 8 | 25011251 | Chain | 2 | 20 | 950-001-125 | Hex Head Cap Screw 1/2-13 x 1 1/2 Gr. 5 | 6 |
| 9 | 25011250 | Spacer | 2 | 21 | 952-002-005 | Flat Washer 1/2 Inch | 8 |
| 10 | 25011882 | Rubber Pad | 1 | 22 | 10304 | Lock Nut 1/2-13 2-Way | 6 |
| 11 | 25011881 | Plastic Pad | 1 | 23 | 034-00136 | Slotted Nut 3/4-10 | 1 |
| 12 | 950-004-088 | Machine Screw 5/16-18 x 1 1/2 Slotted Truss Head | 2 | 24 | 953-001-008 | Cotter Pin 3/16 x 1 3/4 | 1 |

TRACTOR LOADER SNOWPLOW

HYDRAULIC ANGLING KIT OPTION

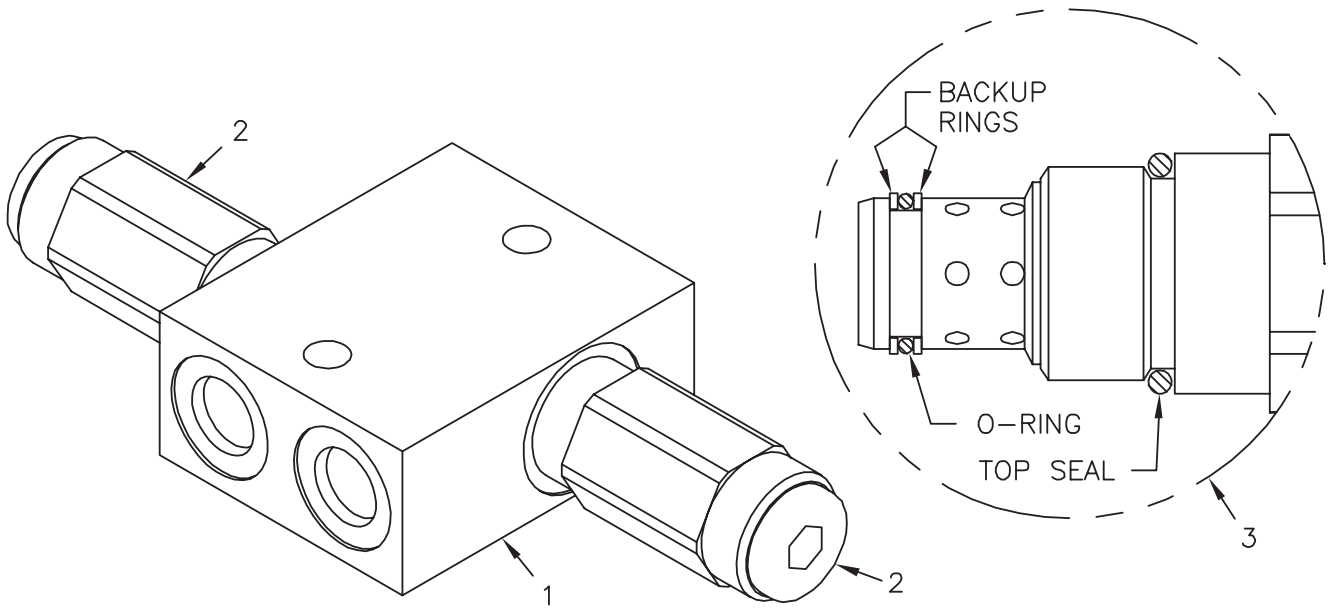


25012435 Hydraulic Angling Kit

DWG. NO. 6115

| REF. NO. | PART NUMBER | DESCRIPTION | QTY. | REF. NO. | PART NUMBER | DESCRIPTION | QTY. |
|----------|-------------|--|------|----------|-------------|--|------|
| 1 | 25012530 | Relief Valve Assembly | 1 | 8 | 957-022-010 | Hydraulic Hose Assembly 1/4 x 18 | 2 |
| 2 | 25012533 | Crossover Relief Valve | 1 | 9 | 25012529 | Feed Hose/Sleeve Assembly | 2 |
| 3 | 956-008-037 | Restricted 45° Adapter 9/16 ORB x 9/16 JIC | 2 | 10 | 25012532 | Hose Loop Weldment | 1 |
| 4 | 206-01024 | Straight Adapter 9/16 ORB x 9/16 JIC | 1 | 11 | 25012531 | Valve Bracket | 1 |
| 5 | 956-005-023 | 45° Adapter 9/16 ORB x 9/16 JIC | 2 | 12 | 950-001-217 | Hex Head Cap Screw 5/16-18 x 3 3/4 Gr. 5 | 2 |
| 6 | 956-005-022 | 90° Adapter 9/16 ORB x 9/16 JIC | 1 | 13 | 952-001-002 | Lock Washer 5/16 Inch | 2 |
| 7 | 25010523 | 1 1/2 x 10 Hydraulic Cylinder | 2 | 14 | 951-001-004 | Hex Nut 5/16-18 | 2 |

CROSSOVER RELIEF VALVE

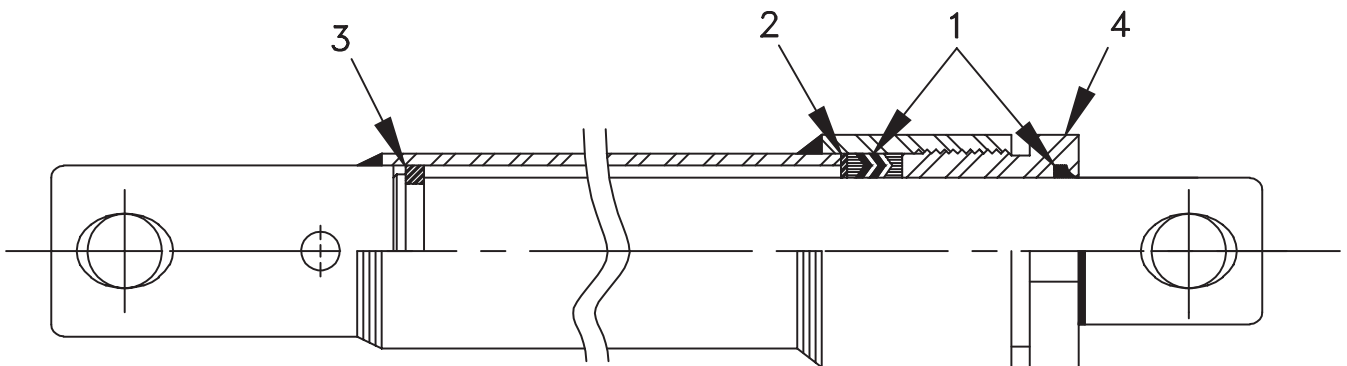


25012533 Crossover Relief Valve

DWG. NO. 6116

| REF. NO. | PART NUMBER | DESCRIPTION | QTY. | REF. NO. | PART NUMBER | DESCRIPTION | QTY. |
|----------|-------------|----------------------------|------|----------|-------------|-------------|------|
| 1 | 25012546 | Manifold Block | 1 | 3 | 25012544 | Seal Kit | 2 |
| 2 | 25012545 | Cartridge Valve - 2100 PSI | 2 | | | | |

1 1/2 X 10 HYDRAULIC CYLINDER



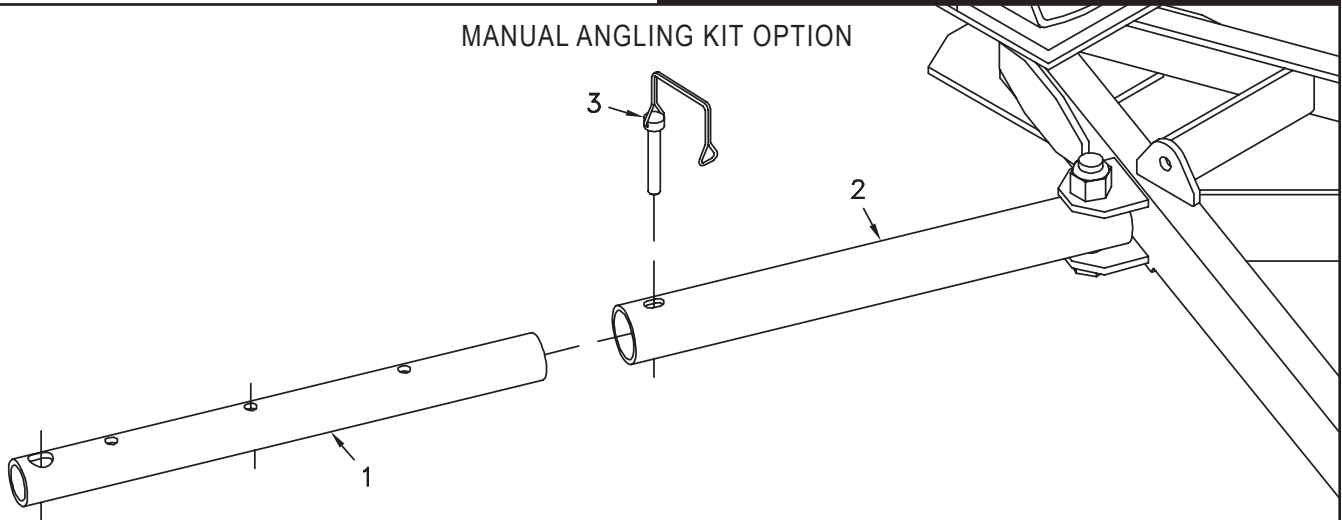
25010523 1 1/2 x 10 Hydraulic Cylinder

DWG. NO. 3941

| REF. NO. | PART NUMBER | DESCRIPTION | QTY. | REF. NO. | PART NUMBER | DESCRIPTION | QTY. |
|----------|-------------|-------------|------|----------|-------------|-------------|------|
| 1 | 25010464 | Seal Kit | 1 | 3 | 25010017 | Guide Ring | 1 |
| 2 | 25010016 | Seat Ring | 1 | 4 | 25010018 | Packing Nut | 1 |

TRACTOR LOADER SNOWPLOW

MANUAL ANGLING KIT OPTION



25012436 Manual Angling Kit

DWG. NO. 6117

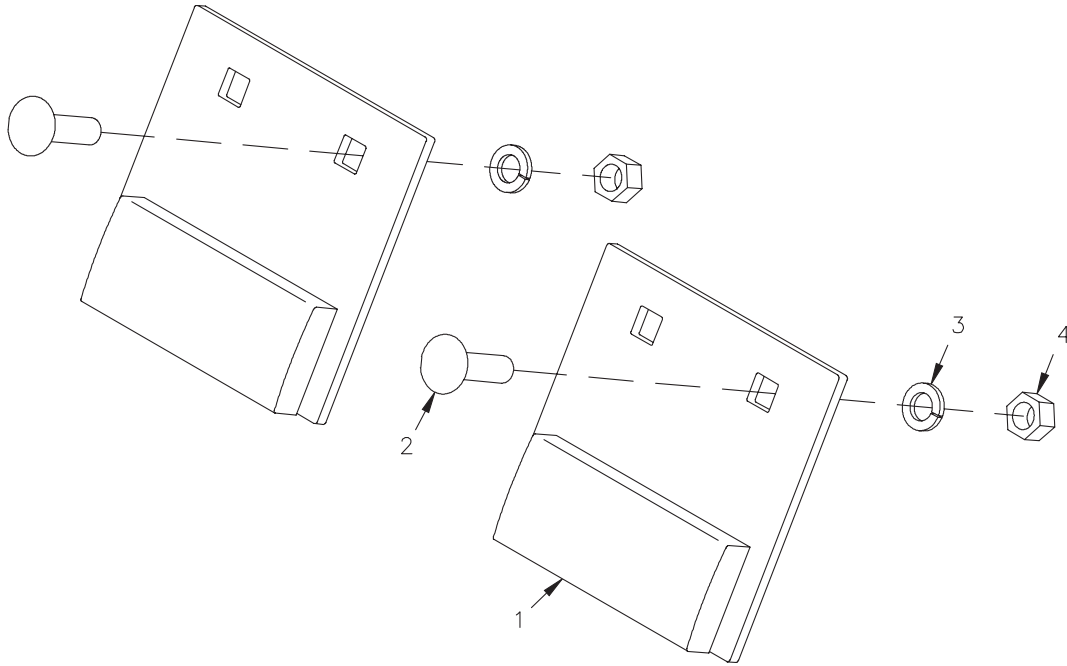
| REF. NO. | PART NUMBER | DESCRIPTION | QTY. | REF. NO. | PART NUMBER | DESCRIPTION | QTY. |
|----------|-------------|-----------------------|------|----------|-------------|-------------|------|
| 1 | 25012516 | Inner Adjustment Tube | 2 | 3 | 81005172 | Snap Pin | 2 |
| 2 | 25012517 | Outer Tube | 2 | | | | |

SECTION 2 PLOW ACCESSORIES

| | |
|--------|---|
| PAGE 2 | WEAR PLATE KIT CURB GUARD KITS |
| PAGE 3 | SKID SHOE ASSEMBLY POLY SNOW DEFLECTOR KIT |
| PAGE 4 | TOUCH UP PAINT |

TRACTOR LOADER SNOWPLOW

WEAR PLATE KIT

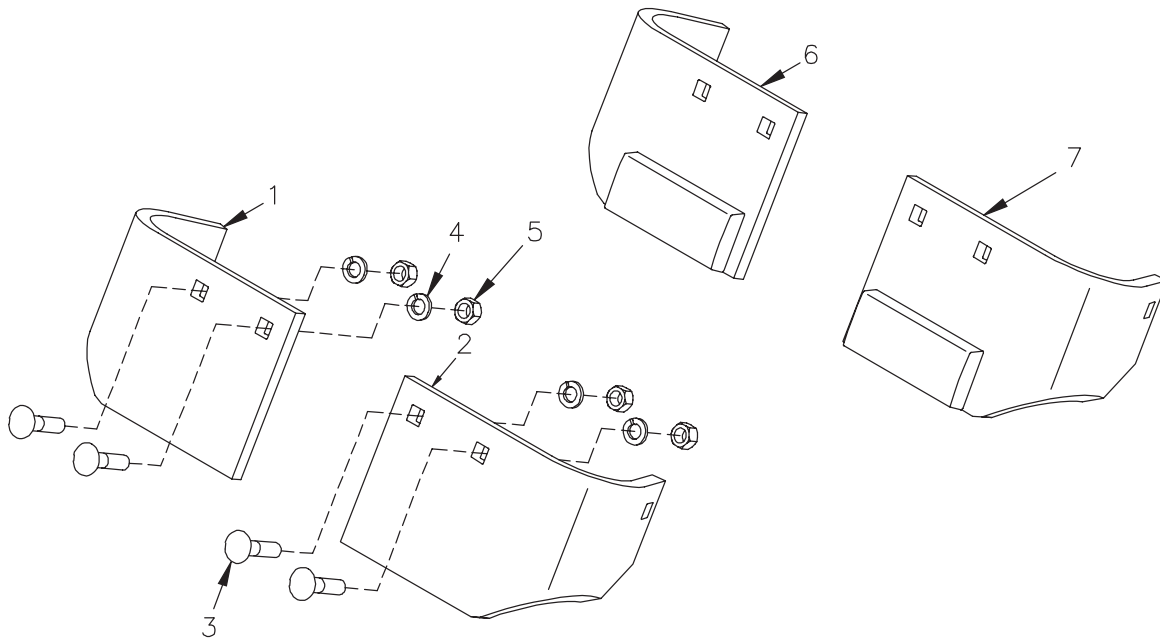


25012587 Wear Plate Kit

DWG. NO. 6331

| REF. NO. | PART NUMBER | DESCRIPTION | QTY. | REF. NO. | PART NUMBER | DESCRIPTION | QTY. |
|----------|-------------|------------------------------------|------|----------|-------------|----------------------|------|
| 1 | 25012588 | Wear Plate Weldment | 2 | 3 | 952-001-004 | Lock Washer 1/2 Inch | 4 |
| 2 | 950-003-058 | Carriage Bolt 1/2-13 x 1 3/4 Gr. 5 | 4 | 4 | 951-001-007 | Hex Nut 1/2-13 | 4 |

CURB GUARD KITS



25011695 Curb Guard Kit - Standard

25012726 Curb Guard Kit With Wear Bars

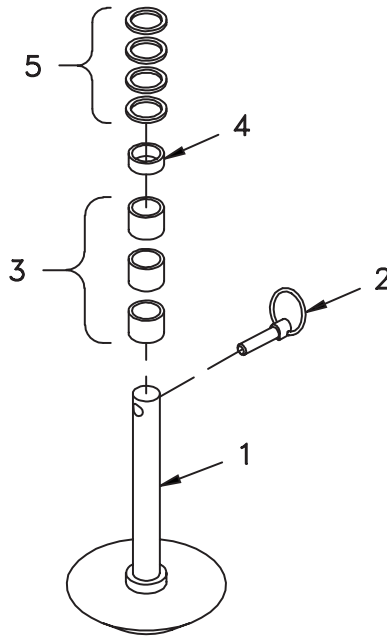
DWG. NO. 5486

| REF. NO. | PART NUMBER | DESCRIPTION | QTY. | REF. NO. | PART NUMBER | DESCRIPTION | QTY. |
|----------|-------------|--------------------------------|------|----------|-------------|-----------------------------|------|
| 1 | 25011712 | RH Curb Guard - Standard | 1 | 5 | 951-001-007 | Hex Nut 1/2-13 | 4 |
| 2 | 25011713 | LH Curb Guard - Standard | 1 | 6 | 25012722 | RH Curb Guard With Wear Bar | 1 |
| 3 | 950-003-025 | Carriage Bolt 1/2-13 x 2 Gr. 5 | 4 | 7 | 25012723 | RH Curb Guard With Wear Bar | 1 |
| 4 | 952-001-004 | Lock Washer 1/2 Inch | 4 | | | | |

TRACTOR LOADER SNOWPLOW

SEC 2

SKID SHOE ASSEMBLY

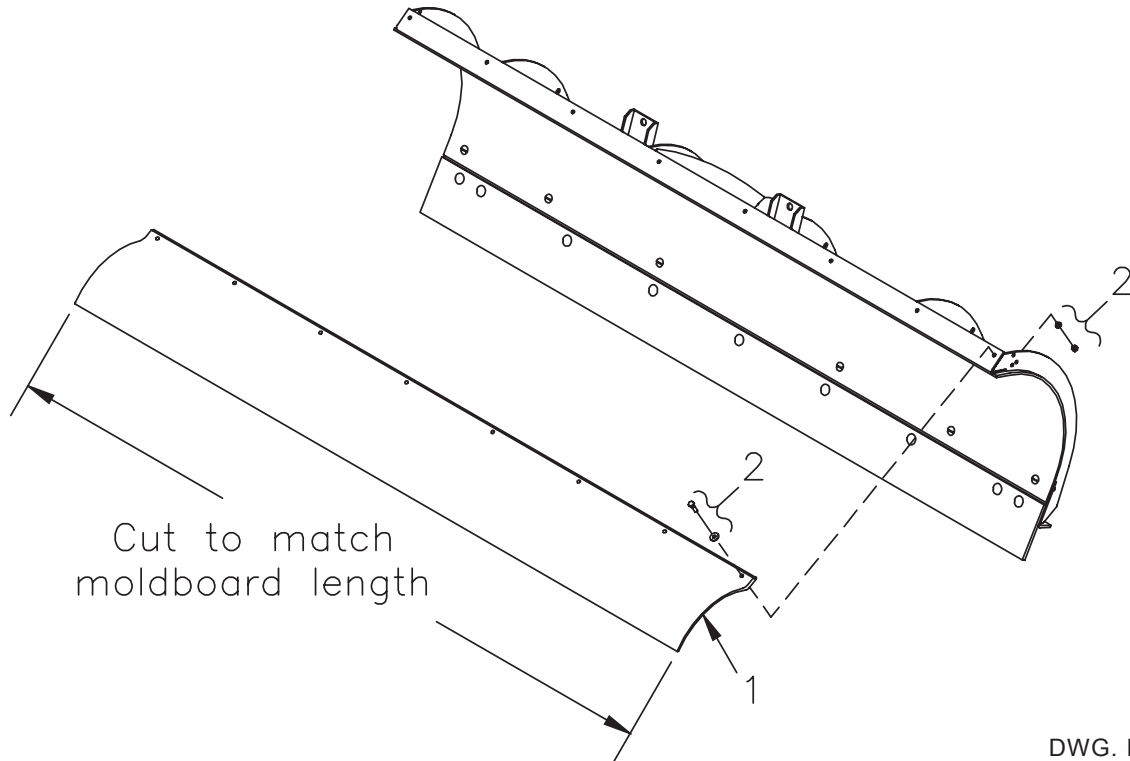


25011487 Skid Assembly

DWG. NO. 5708

| REF. NO. | PART NUMBER | DESCRIPTION | QTY. | REF. NO. | PART NUMBER | DESCRIPTION | QTY. |
|----------|-------------|---------------------|------|----------|-------------|-------------------|------|
| 1 | 25011478 | Cast Iron Skid Shoe | 1 | 4 | 25010048 | 1/2" Skid Spacer | 1 |
| 2 | 25010319 | Klik Pin | 1 | 5 | 952-004-071 | Machinery Bushing | 4 |
| 3 | 25010049 | 1" Skid Spacer | 3 | | | | |

POLY SNOW DEFLECTOR KIT

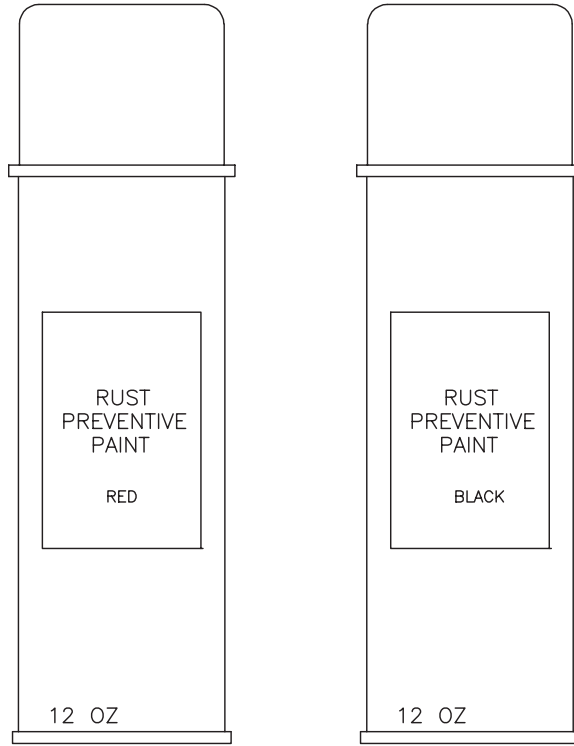


DWG. NO. 5761

| REF. NO. | PART NUMBER | DESCRIPTION | QTY. | REF. NO. | PART NUMBER | DESCRIPTION | QTY. |
|----------|-------------|-------------------------|------|----------|-------------|-------------------------|------|
| 1 | 25011789 | Poly Snow Deflector Kit | 1 | 2 | 25011793 | Bolt Box Snow Deflector | 1 |

TRACTOR LOADER SNOWPLOW

TOUCH UP PAINT



DWG. NO. 5737

| REF. NO. | PART NUMBER | DESCRIPTION | QTY. | REF. NO. | PART NUMBER | DESCRIPTION | QTY. |
|----------|-------------|--------------------|------|----------|-------------|----------------------|------|
| 1 | 921-001-416 | Red Touch Up Paint | 1 | 2 | 921-001-414 | Black Touch Up Paint | 1 |

2
SECS