

VEHICLE INSTALLATION INSTRUCTIONS FOR:
 FORD 4X4: 2008 & NEWER SUPER DUTY
 F250 - 350 - 450 - 550

Hiniker Company
 58766 240th St.
 P.O. Box 3407
 Mankato, MN 56002

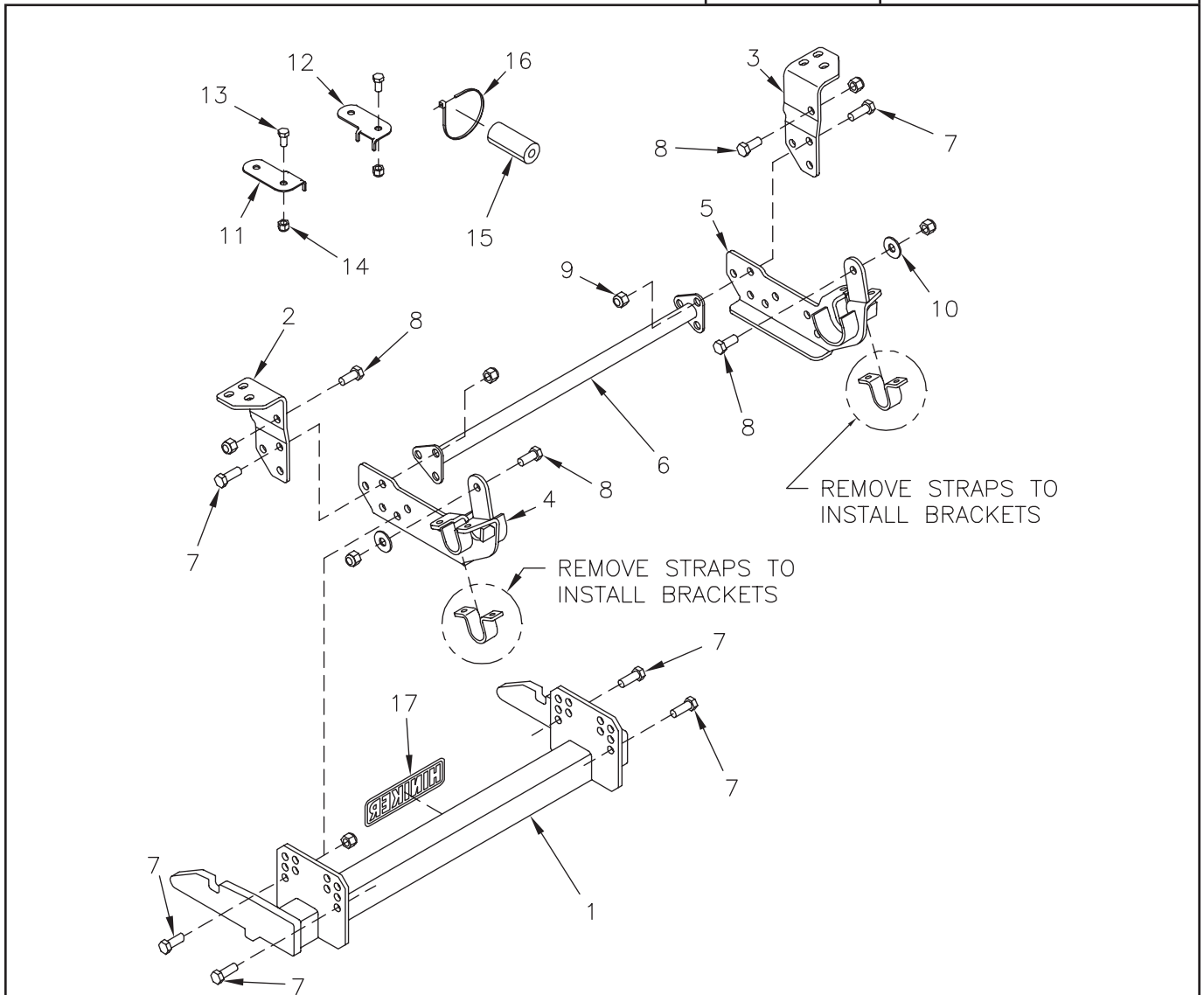
INSTRUCTION SHEET NO: 25012257 Rev. A

October 1, 2009



IMPORTANT: Read the Snowplow Operator's Manual before assembling this kit.

| Minimum Vehicle Recommendations | |
|---------------------------------|--|
| MFR Snowplow Prep Package | REAR BALLAST - 500 lbs. when plow is attached. Secure Weight Behind Rear Wheels. |



Mount Kit 25012247

DWG. NO. 5991

| REF. NO. | PART NUMBER | DESCRIPTION | QTY. | REF. NO. | PART NUMBER | DESCRIPTION | QTY. |
|----------|-------------|---|------|----------|-------------|-------------------------------------|------|
| 1 | 25012253 | Prong Weldment | 1 | 10 | 952-002-007 | Flat Washer 5/8 Inch | 2 |
| 2 | 25012252 | LH Front Bracket | 1 | 11 | 25012255 | LH Headlight Extension Bracket | 1 |
| 3 | 25012251 | RH Front Bracket | 1 | 12 | 25012254 | RH Headlight Extension Bracket | 1 |
| 4 | 25012250 | LH Side Bracket Weldment | 1 | 13 | 950-001-231 | Hex Head Cap Screw 1/2-13 x 1 Gr. 5 | 2 |
| 5 | 25012249 | RH Side Bracket Weldment | 1 | 14 | 951-003-009 | Lock Nut 1/2-13 Nylon Insert | 2 |
| 6 | 25012248 | Cross Tube Weldment | 1 | 15 | 39107001 | Foam Grommet | 1 |
| 7 | 950-001-132 | Hex Head Cap Screw 5/8-11 x 1 3/4 Gr. 5 | 14 | 16 | 367-001-014 | Plastic Tie 8 Inch | 1 |
| 8 | 950-001-087 | Hex Head Cap Screw 5/8-11 x 1 1/2 Gr. 5 | 4 | 17 | 25010008 | Hiniker Decal | 1 |
| 9 | 060756 | Lock Nut 5/8-11 Nylon Insert | 18 | | 25012258 | Bolt Bag | 1 |

All hardware should be tightened only enough to ensure safety during assembly. Fully tighten all hardware after entire assembly is completed.

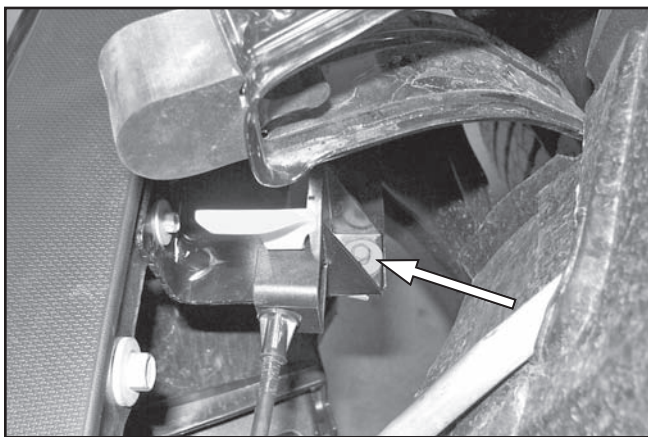
GRADE 5 TYPE B & F LOCK NUT TORQUE VALUES

| Size | Ft-lbs. | N-m |
|-------|---------|---------|
| 5/16" | 13-18 | 17-25 |
| 3/8" | 23-33 | 31-44 |
| 1/2" | 58-82 | 79-112 |
| 5/8" | 117-165 | 158-223 |

GRADE 5 BOLT TORQUE VALUES*

| Size | Ft-lbs. | N-m |
|----------------------------------|---------|---------|
| 1/4" | 8-12 | 11-16 |
| 3/8" | 29-41 | 39-56 |
| 1/2" | 73-103 | 99-140 |
| 5/8" | 146-206 | 198-279 |
| * applications without lock nuts | | |

1. Open the hood of the truck to access the bolt fastening the hood latch mechanism to the bumper brace. Remove the bolt and set aside the latch mechanism for removal of the bumper.

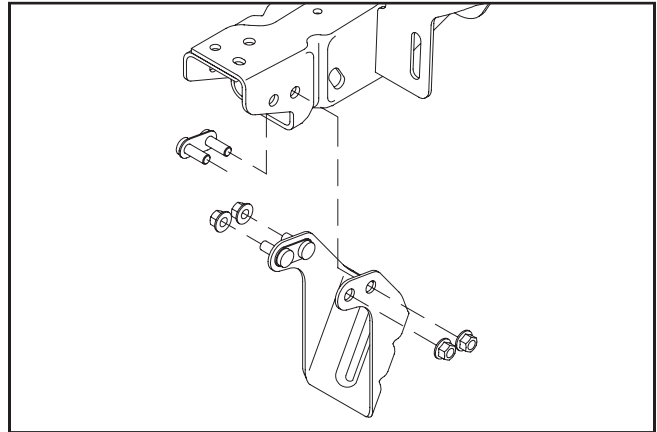


Hood Latch Mechanism Screw PHOTO NO. DCP1146

Unfasten the rubber splash shield from the lower edge of the bumper assembly by prying loose three plastic barbed retainers.

Disconnect the engine block heater cord from the inside of the bumper and from the front of the RH frame rail by prying loose plastic barbs from their retaining holes.

Unbolt six fasteners to remove the bumper from the vehicle. Save the hardware for reinstallation.



DWG NO. 6561

Unbolt channel brackets from the vehicle frame rails, if equipped, and return to the vehicle owner for reinstallation if the mount kit is removed from the truck in the future.

2. Unbolt both tow hooks from the vehicle by removing three bolts per side.

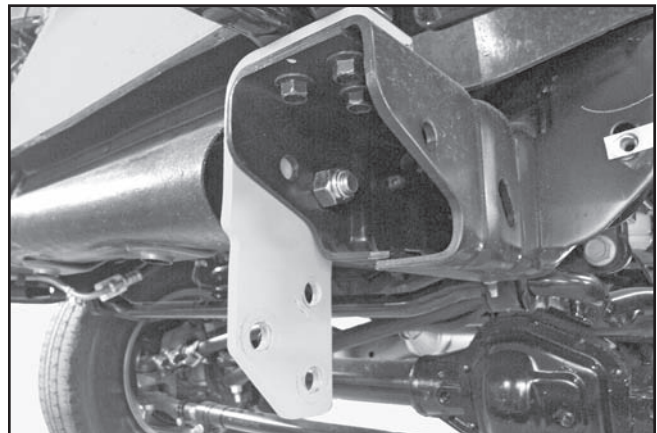


PHOTO NO. DCP1139

Place the LH and RH front brackets from the kit over the tops of the LH and RH vehicle frame rails so that holes in the brackets match holes in the rails. Set the tow hooks on top of the brackets, then insert the bolts through holes in the vehicle frame and mount brackets before rethreading them into the tow hooks.

Insert 5/8 inch x 1 1/2 inch hex bolts through holes in the vertical faces of the two brackets and frame rails. Retain the bolts with 5/8 inch lock nuts.

3. On one side of the vehicle at a time, remove the U-shaped retaining strap from the sway bar bushing by loosening two nuts.

Straps will be replaced by retainers on the mount kit brackets and should be returned to the vehicle owner for reinstallation if the mount kit is removed from the truck in the future.

Install the LH and RH side brackets according to the following procedure.

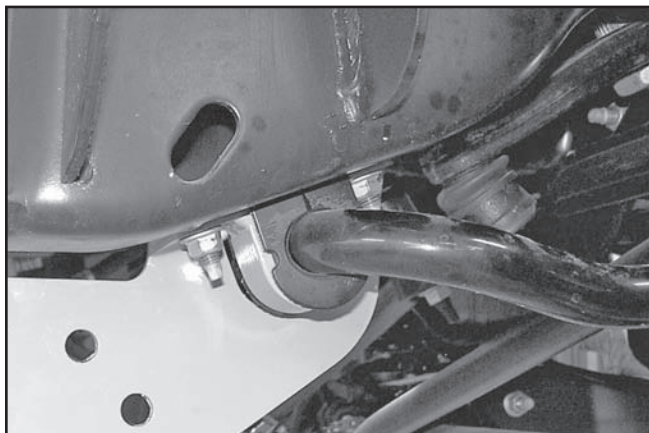


PHOTO NO. DCP1121

Lift the side bracket to the bottom of the vehicle frame rail so that bolts from the vehicle pass through holes in the bracket, and the sway bar bushing is recaptured in the bracket strap. Thread the original nuts back onto the bolts to hold the bracket to the vehicle.

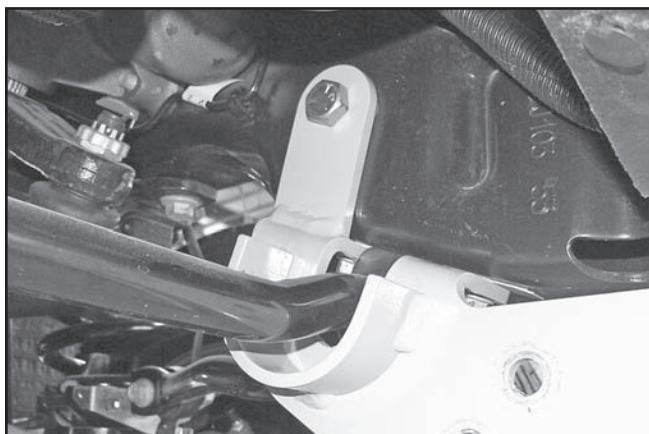


PHOTO NO. DCP1124

Insert a 5/8 inch x 1 1/2 inch hex bolt through the rear tab of the side bracket and into the vehicle frame. Retain the bolt with a flat washer and lock nut inside the frame.



PHOTO NO. DCP1119

After both side brackets have been fastened to the vehicle at the rear, bolt the cross tube weldment between the front sets of holes by inserting 5/8 inch x 1 3/4 inch hex bolts through holes in the front brackets, side brackets and cross tube end plates. Secure the bolts with 5/8 inch lock nuts.

4. Fasten the mount plates of the prong weldment to the holes in the LH and RH side brackets with eight 5/8 Inch x 1 3/4 inch hex bolts and lock nuts.

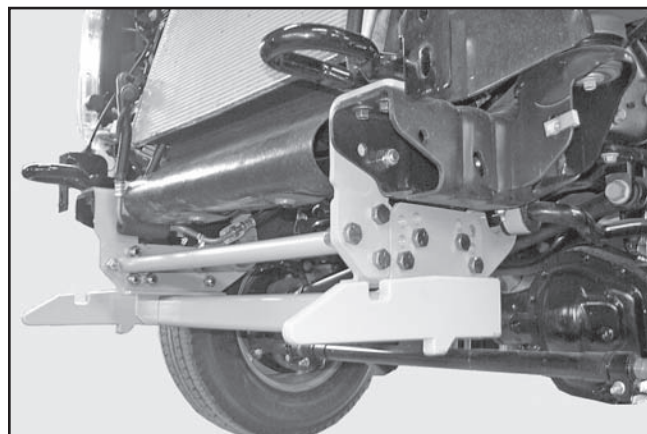


PHOTO NO. DCP1108

Bottom edges of the prongs should measure about 10 inches above the ground. Ideally, the prongs should lift the plow frame slightly when driving into the plow.

5. Fully tighten all hardware to specified torque values, starting with the rear bolts and working forward.

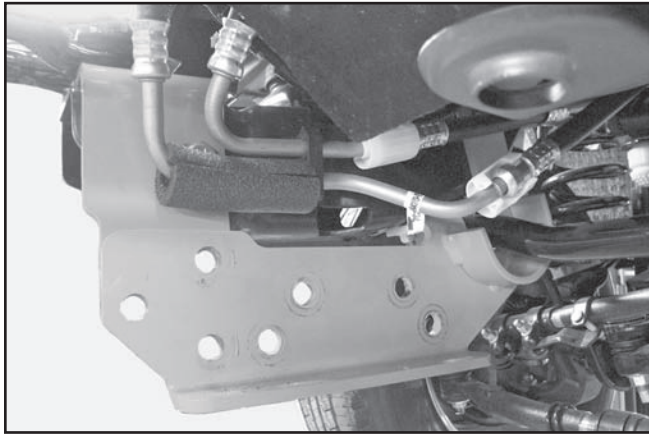


PHOTO NO. DCP1133

On the passenger side of the vehicle, install the foam grommet from the kit around the cooling line to protect the line against rubbing on the bolt head. Secure the grommet with the plastic tie strap.

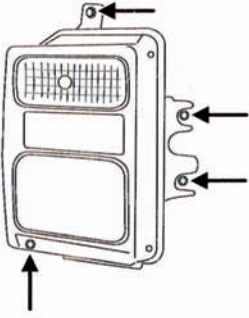
6. Reinstall the front bumper back onto the vehicle using the original hardware.

Reconnect the engine block heater cord, rubber splash shield and hood latch mechanism with original fasteners.

Headlight Removal

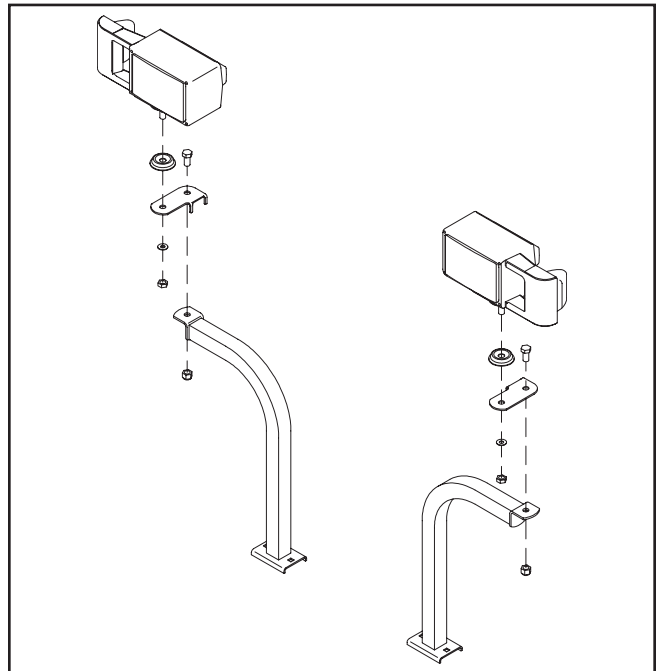
The following instructions are reprinted from a 2008 Ford Super Duty Truck owner's manual. Follow the instructions when removing the headlights to install headlight adapters.

1. Make sure that the headlamp control is in the OFF position and open the hood.
2. Remove the four bolts from the top, side and bottom front of the headlamp assembly.
3. Pull the assembly straight out.



Headlight Extension Brackets

Extension brackets are required to move the plow lights forward to avoid interference between the back of the headlights and the truck grill when opening the hood with the plow attached.



DWG. NO. 5992

1. Bolt the LH and RH extension brackets to the plow headlight brackets with 1/2 inch x 1 inch hex bolts and lock nuts.
2. Fasten the LH and RH headlights onto the brackets with hardware supplied with the lights.